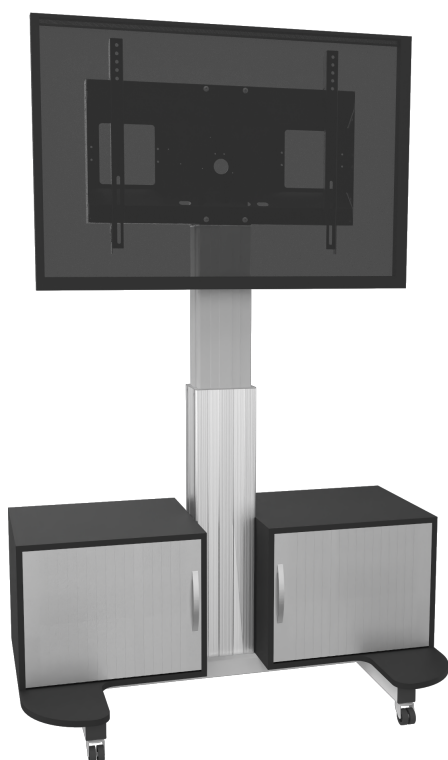


MOBILE TV CABINET – TV STAND WITH MOUNT, ELECTRICALLY HEIGHT ADJUSTABLE 42 - 86 INCH MONITOR STAND

SILVER ANODIZED, WITH TWO BASE CABINETS AND ROLLER BLINDS



PRODUCT

Our Conen Mounts electrically height adjustable mobile TV stands with two roller blinds can be easily adjusted in height. The roller blind TV cabinets provide enough space for documents and other important utensils for your presentation! The silver blinds and the TV cabinet doors are lockable at the front. The right lower cabinet offers you an excerpt for devices such as notebooks and laptops and a height-adjustable shelf. The left lower cabinet has two additional height-adjustable shelves. Another advantage of this system is the absolute freedom from maintenance - it never has to be adjusted, never lubricated or readjusted.

The mobile Conen Mounts TV cabinets have 4 smooth-running wheels and can therefore be easily transported from room to room. Two of these rollers can be identified to fix the system in the desired location.

Accessories



Two large and sturdy handles



Keyboard shelf



Extender for height adjustable aluminum columns in different versions



Brackets and wing lock for locking the side wings in front of the display



Two large and sturdy handles including laptop shelf



Lockable wall brackets

FEATURES

- 2 lockable roller blind TV cabinets made of 19 mm melamine-coated chipboard for the storage of desktop PCs, mini PCs, laptops, etc.
- Lockable cable management flap on the back, silver blinds on the front and lockable rear doors
- 2 height-adjustable shelves left
- 1 extract for appliances, e.g. for your notebook and 1 height-adjustable shelf on the right



Display mount



Mobile



Motorized height adjustable



Single display



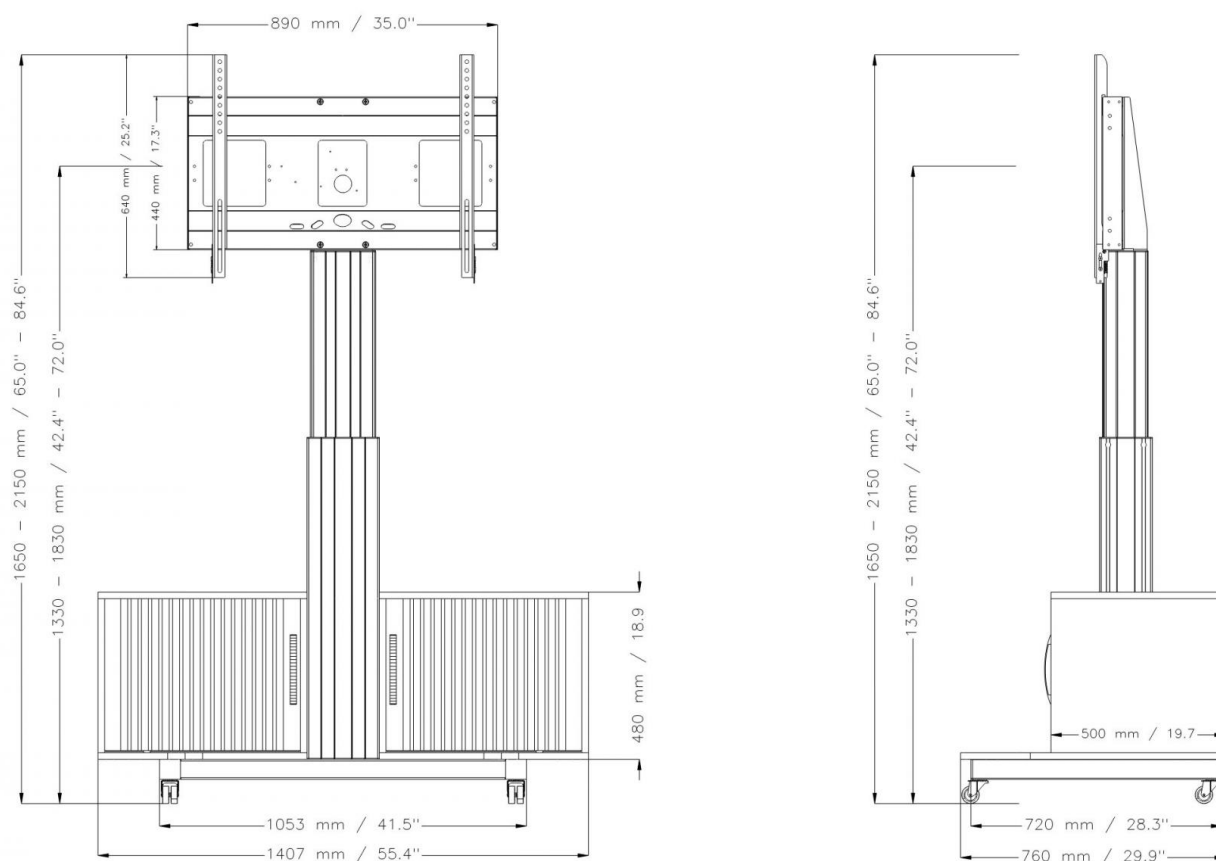
5 years warranty

Max. load
140 kg / 308.6 lbsMax. Vesa
800 x 600

Item number	SCETAU	
Vesa horizontal / Vesa vertical	300 mm - 800 mm / 200 mm - 600 mm	
Frame for all	55" - 86"	
Center to floor distance	1330 mm - 1830 mm	52.4" - 72"
Load capacity	140 kg	308.6 lbs
Width / Height / Depth	1407 mm / 1650 mm - 2150 mm / 760 mm	55.4" / 65" - 84.6" / 29.9"
Weight	117 kg	257.9 lbs
Warranty	5 years limited warranty	
Frame color	RAL 9005 deep black	
Column color	Silver anodized	
Base color	RAL 9006 white aluminum	
Packages	Package dimensions WxHxD	Package weight
AF-SCETA-N	900 x 160 x 450 mm / 35.4 x 6.3 x 17.7"	13 kg / 28.7 lbs
CAB-U		
CCE-70		
MST-SCETA	1090 x 160 x 780 mm / 42.9 x 6.3 x 30.7"	24,2 kg / 53.4 lbs

DIMENSIONS

in mm / inch



MANUFACTURER:

CONEN Produkte GmbH
Conenstr. 4
54497 Morbach-Gonzerath

Phone: +49 (0) 6533 75-100
Fax: +49 (0) 6533 75-600
E-Mail: info@conenmounts.com

Germany

www.conenmounts.com

CONEN

CONEN is not responsible for printing errors. CONEN reserves the right to change or modify pricing and product specifications with or without prior notification. Illustrations may not be exactly as shown. No parts may be reproduced by any means without prior authorization of CONEN. All rights reserved 2025.