

## HEIGHT ADJUSTABLE MONITOR AND TV WALL MOUNT, LITE SERIES WITH 50 CM OF VERTICAL TRAVEL

COLUMN SILVER, ANTI-COLLISION, LOW MODEL

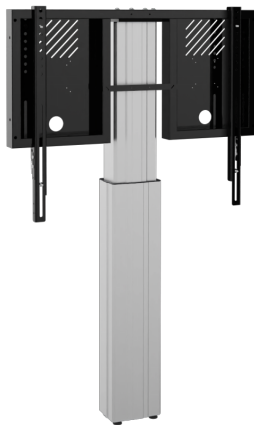
## PRODUCT

Adjustable TV & monitor wall mount for 42"-75" (interactive) touch screen monitors.

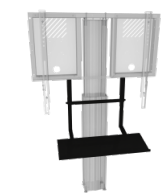
The RLI8050WK is designed for touch screen monitors up to 75". The units feature a sturdy monitor mount with integrated cable management and "pull & release" locking brackets for quick and easy mounting of the monitor.

The RLI8050WK comes with a slim column that offers 50 cm of vertical travel.

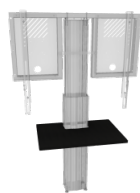
The unit comes flat-packed in 2 cartons and is courier-shippable.



## Accessories



Keyboard shelf for LITE series



Front shelf for LIGHT system



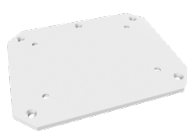
Laptop side shelf



Universal PC bracket



Floor plate for display mounts LITE series (CCELW-AF + RLi...)



Floor plate for Lite series (CCELW-AF + RLi...), for fixed floor mounting

## FEATURES

- > Heavy duty mount for touch screen monitors up to 75"
- > "Pull & release" brackets for easy mounting of the monitor
- > VESA pattern, max. 800 x 600
- > Integrated cable management
- > 50 cm of smooth motorized height adjustment, actuator 1500N, 47 mm / 1.85" per second
- > Levelling feet and 2 wall mounting brackets for optimum stability
- > With anti-collision function
- > Quick and easy mounting to the wall
- > Wired remote control included



Display mount



Wall mounted



Motorized height adjustable



Single display



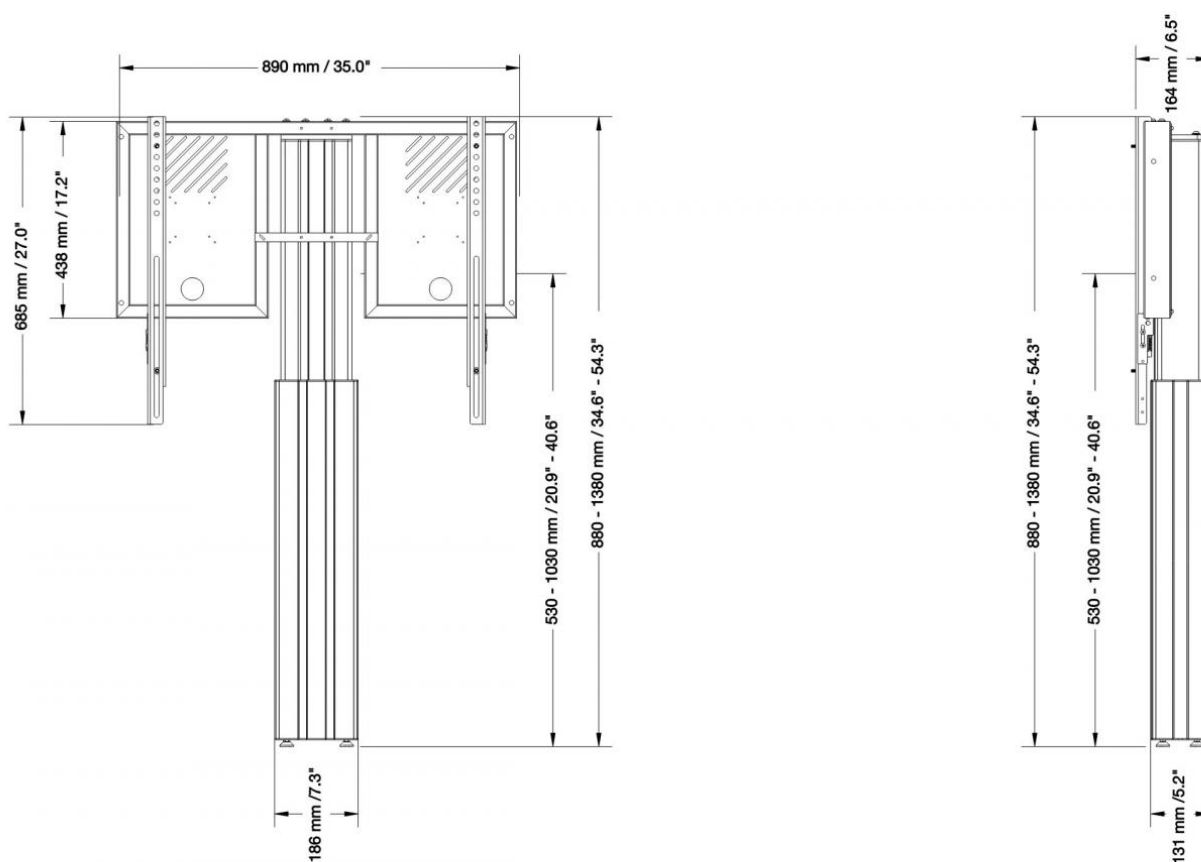
5 years warranty

Max. load  
136 kg / 299.8 lbsMax. Vesa  
800 x 600

Item number	RLI8050WK	
Vesa horizontal / Vesa vertical	300 mm - 800 mm / 200 mm - 600 mm	
Frame for all	55" - 75"	
Center to floor distance	550 mm - 1050 mm	21.7" - 41.3"
Load capacity	136 kg	299.8 lbs
Width / Height / Depth	890 mm / 880 mm - 1380 mm / 164 mm	35" / 34.6" - 54.3" / 6.5"
Warranty	5 years limited warranty	
Frame color	RAL 9005 deep black	
Column color	Silver anodized	
Packages	Package dimensions WxHxD	Package weight
AFSCETARLI	930 x 70 x 540 mm / 36.6 x 2.8 x 21.3"	14 kg / 30.9 lbs
CCEL8050WK	1005 x 245 x 195 mm / 39.6 x 9.6 x 7.7"	19 kg / 41.9 lbs
Total weight	33 kg / 72.8 lbs	

## DIMENSIONS

in mm / inch



## MANUFACTURER:

CONEN Produkte GmbH  
Conenstr. 4  
54497 Morbach-Gonzerath

Phone: +49 (0) 6533 75-100  
Fax: +49 (0) 6533 75-600  
E-Mail: [info@conenmounts.com](mailto:info@conenmounts.com)

Germany

[www.conenmounts.com](http://www.conenmounts.com)

03/05/2025  
Page 2/2

# CONEN

CONEN is not responsible for printing errors. CONEN reserves the right to change or modify pricing and product specifications with or without prior notification. Illustrations may not be exactly as shown. No parts may be reproduced by any means without prior authorization of CONEN. All rights reserved 2025.