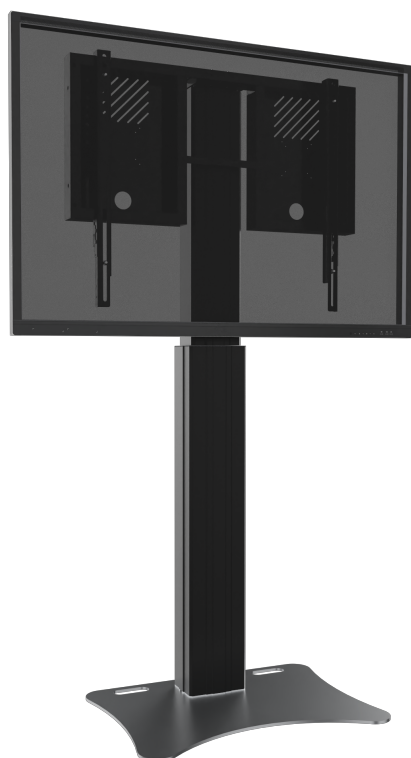


HEIGHT ADJUSTABLE DISPLAY AND MONITOR STAND, LITE SERIES WITH 70 CM OF VERTICAL TRAVEL

COLUMN BLACK, ANTI-COLLISION, FLOOR PLATE BLACK



PRODUCT

Height adjustable display & monitor stand for 55"-86" (interactive) touch screen monitors.

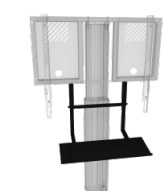
The RLI10070PBK is designed for touch screen monitors up to 86". The units feature a sturdy monitor mount with integrated cable management and "pull & release" locking brackets for quick and easy mounting of the monitor.

The RLI10070PBK monitor stand comes with a slim column that offers 70 cm of vertical travel.

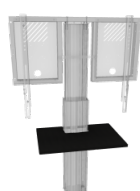
A 0.3" thick, solid steel plate secures to the motorized center column. Designed for static, freestanding applications or to add stability to wall mount systems, secured to e.g. a stud wall. The floor plate features cut-outs/ handles for easy transportation. It comes powder coated in black.

The unit comes flat-packed in 3 cartons and is courier-shippable.

Accessories



Keyboard shelf for LITE series



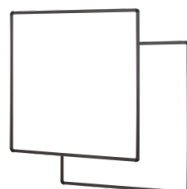
Front shelf for LIGHT system



Laptop side shelf



Universal PC bracket



Two whiteboard side wings



Video conference camera top shelf LITE series for displays from 65 - 86 inch

FEATURES

- > Heavy duty mount for touch screen monitors up to 86"
- > "Pull & release" brackets for easy mounting of the monitor
- > VESA pattern, max. 800 x 600
- > Integrated cable management
- > 70 cm of smooth motorized height adjustment, actuator 1500N, 47 mm / 1.85" per second
- > Floor plate and 2 wall mounting brackets for extra stability
- > With anti-collision function
- > Quick and easy mounting to the wall
- > Wired remote control included



Display mount



Wall mounted



Motorized height adjustable



Single display



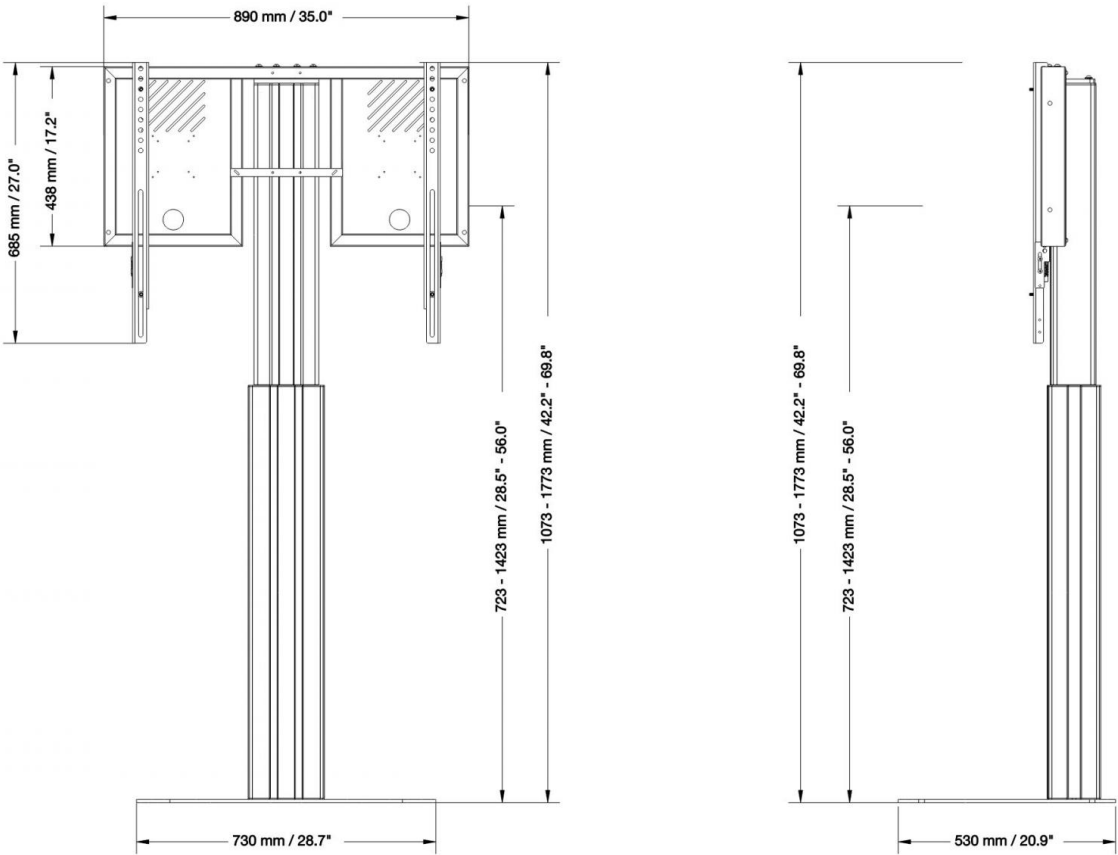
5 years warranty

Max. load
136 kg / 299.8 lbsMax. Vesa
800 x 600

Item number	RLI10070PBK	
Vesa horizontal / Vesa vertical	300 mm - 800 mm / 200 mm - 600 mm	
Frame for all	55" - 86"	
Center to floor distance	723 mm - 1423 mm	28.5" - 56"
Load capacity	136 kg	299.8 lbs
Width / Height / Depth	890 mm / 1073 mm - 1773 mm / 530 mm	35" / 42.2" - 69.8" / 20.9"
Warranty	5 years limited warranty	
Frame color	RAL 9005 deep black	
Column color	Black anodized	
Base color	RAL 9005 deep black	
Packages	Package dimensions WxHxD	Package weight
AFSCETARLI	895 x 65 x 485 mm / 35.2 x 2.6 x 19.1"	14 kg / 30.9 lbs
CCEL10070WBK	1190 x 195 x 245 mm / 46.9 x 7.7 x 9.6"	22,3 kg / 49.2 lbs
PSTSCETABLI	750 x 20 x 600 mm / 29.5 x 0.8 x 23.6"	21,8 kg / 48.1 lbs
Total weight	58,1 kg / 128.2 lbs	

DIMENSIONS

in mm / inch



MANUFACTURER:

CONEN Produkte GmbH
Conenstr. 4
54497 Morbach-Gonzerath

Phone: +49 (0) 6533 75-100
Fax: +49 (0) 6533 75-600
E-Mail: info@conenmounts.com

Germany

www.conenmounts.com