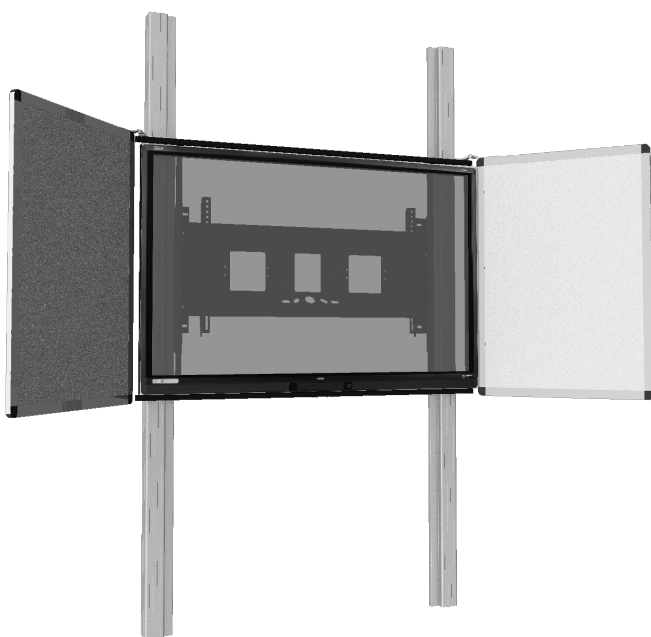


WALL MOUNTED 2 PYLON SLIDING SYSTEM FOR DISPLAYS FROM 65-86"

MANUALLY HEIGHT-ADJUSTABLE WITH PULLEY AND COUNTER WEIGHT, WITH 2 WHITEBOARD WINGS

PRODUCT



This manually height-adjustable pylon system with pulley and whiteboard wings is compatible with all touch screen displays available on the market from 65" to 86" screen diagonal.

The two aluminum pylons are mounted on the wall and floor, the display brackets slides between these pylons by pulley and counter weight. This ensures that every user can work and present at the ergonomically best height.

To the right and left of the touchscreen display are two whiteboard wings, which are magnetic, can be written on and can be wiped dry. The wings are encased in aluminum profiles, which are waterproof glued and come in a black anodized colour. A handle is supplied as standard for height adjustment.

Accessories



Keyboard shelf



2 galvanized adjustable wall mounting brackets



2 galvanized wall mounting brackets



Brackets and wing lock for locking the side wings in front of the display



Swivel arm for notebooks

FEATURES

- Please indicate the model of the monitor when placing your order
- Manually height-adjustable system with 2 pylons for floor and wall mounting
- Pylon length 2900 mm or 2600 mm
- Height adjustment with counterweights and Pulley
- 2 whiteboard wings which are magnetic, can be written on and are dry erasable.
- All connections on the display are freely accessible



Display mount



Wall mounted



Manual height adjustable



Single display



Max. load
130 kg / 286.6 lbs

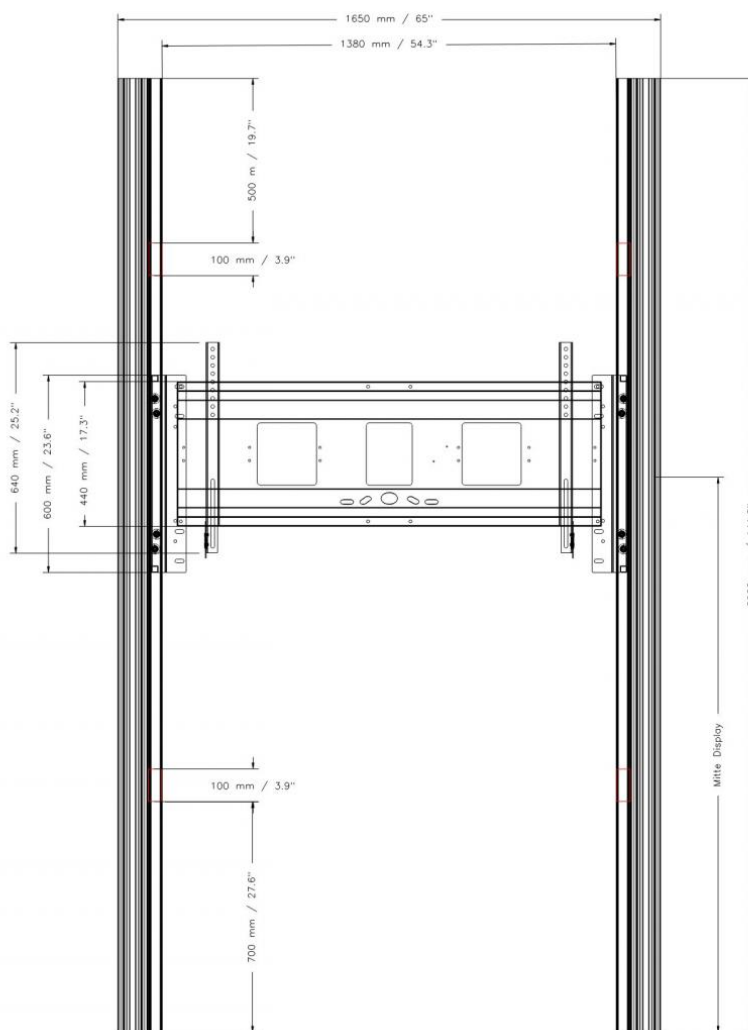


Max. Vesa
800 x 600

Item number	PYFKL-IFPD-W	
Vesa horizontal / Vesa vertical	200 mm - 800 mm / 200 mm - 600 mm	
Frame for all	65" - 86"	
Load capacity	130 kg	286.6 lbs
Width / Height / Depth	1650 mm / 2900 mm / 136 mm	65" / 114.2" / 5.4"
Frame color	RAL 9005 deep black	
Column color	Silver anodized	
Packages	Package dimensions WxHxD	Package weight
AF-PY-NGS		
AFPYN12GU	1300 x 450 x 160 mm / 51.2 x 17.7 x 6.3"	16,5 kg / 36.4 lbs
AI-0019		
GEWICHT-L		
GEWICHT-R		
PYTVF29		
SLWBW..		

DIMENSIONS

in mm / inch



MANUFACTURER:

CONEN Produkte GmbH
Conenstr. 4
54497 Morbach-Gonzerath

Phone: +49 (0) 6533 75-100
Fax: +49 (0) 6533 75-600
E-Mail: info@conenmounts.com

Germany

www.conenmounts.com