

HEIGHT ADJUSTABLE MOBILE TV AND MONITOR STAND, LITE SERIES WITH 70 CM OF VERTICAL TRAVEL

COLUMN SILVER, ANTI-COLLISION, HIGH MODEL, C-STYLE BASE



PRODUCT

Height adjustable mobile tv and monitor stand for 55"-86" (interactive) touch screen monitors.

The mobile monitor stand is designed to withstand intensive daily use and to safely support touch screen monitors up to 86" or 136 kg. The RLI10070CK features a slim center column, offering 70 cm of smooth motorized height adjustment.

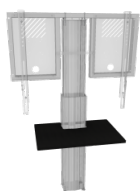
For user convenience and to enhance the teaching experience the stand allows for several accessories to be mounted, including PC shelves, handles and whiteboard side wings.

Product ships flat-packed. Cartons are courier shippable.

Accessories



Keyboard shelf for LITE series



Front shelf for LIGHT system



Laptop side shelf



Universal PC bracket



Soundbar bracket

FEATURES

- Heavy duty mobile monitor stand for monitors up to 86"
- Easy mounting of display thanks to "pull & release" brackets
- Display mount with integrated cable management
- Wide range of accessories available
- Actuator safely concealed in center column offering 70 cm of vertical travel, 1500N, 47 mm/ 1.85" per second
- Wired remote is standard included
- Robust C-style base designed to withstand intensive daily use
- With anti-collision function



Display mount



Mobile



Motorized height adjustable



Single display



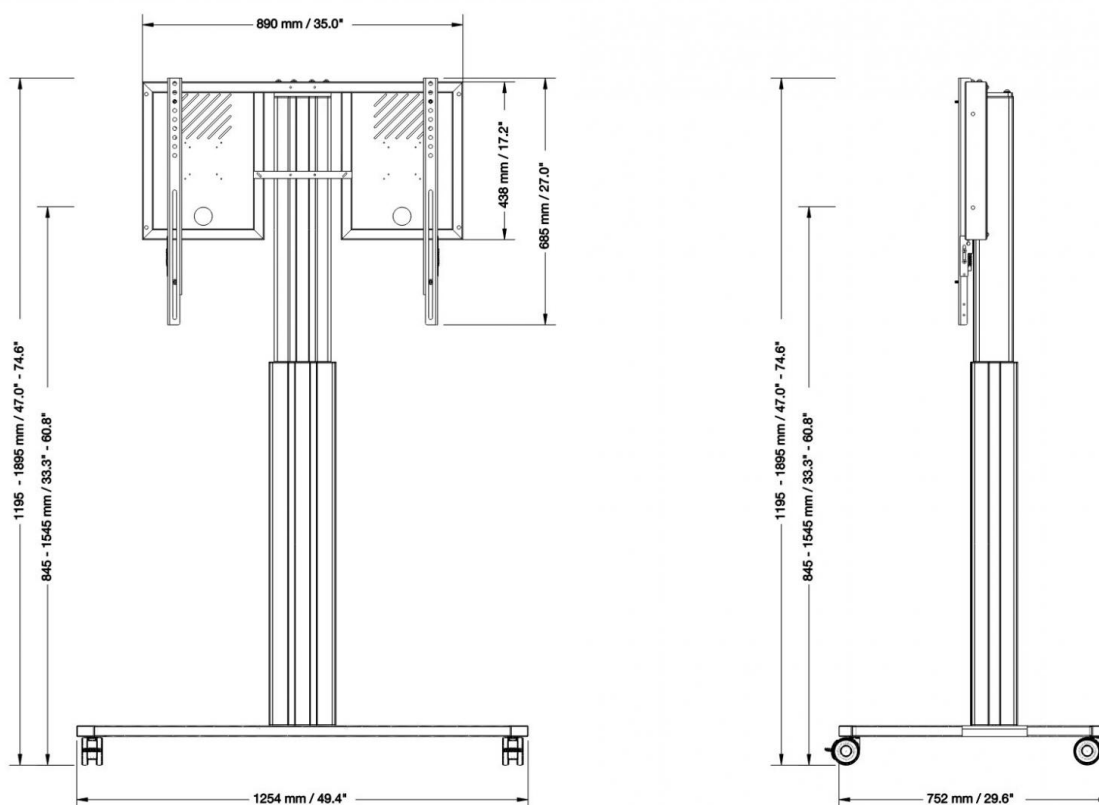
5 years warranty

Max. load
136 kg / 299.8 lbsMax. Vesa
800 x 600

Item number	RLI10070CK	
Vesa horizontal / Vesa vertical	300 mm - 800 mm / 200 mm - 600 mm	
Frame for all	55" - 86"	
Center to floor distance	845 mm - 1545 mm	33.3" - 60.8"
Load capacity	136 kg	299.8 lbs
Width / Height / Depth	1254 mm / 1195 mm - 1895 mm / 752 mm	49.4" / 47" - 74.6" / 29.6"
Warranty	5 years limited warranty	
Frame color	RAL 9005 deep black	
Column color	Silver anodized	
Base color	RAL 9006 white aluminum	
Packages	Package dimensions WxHxD	Package weight
AFSCETARLI	930 x 70 x 540 mm / 36.6 x 2.8 x 21.3"	14 kg / 30.9 lbs
CCEL10070K	1190 x 195 x 245 mm / 46.9 x 7.7 x 9.6"	22,3 kg / 49.2 lbs
MSTSCETACLI	1280 x 130 x 790 mm / 50.4 x 5.1 x 31.1"	15,5 kg / 34.2 lbs
Total weight	51,8 kg / 114.3 lbs	

DIMENSIONS

in mm / inch



MANUFACTURER:

CONEN Produkte GmbH
Conenstr. 4
54497 Morbach-Gonzerath

Phone: +49 (0) 6533 75-100
Fax: +49 (0) 6533 75-600
E-Mail: info@conenmounts.com

Germany

www.conenmounts.com

03/05/2025
Page 2/2

CONEN

CONEN is not responsible for printing errors. CONEN reserves the right to change or modify pricing and product specifications with or without prior notification. Illustrations may not be exactly as shown. No parts may be reproduced by any means without prior authorization of CONEN. All rights reserved 2025.